

# Tip of the Day

## Customizing the WinEdt Menu

David Arnold

April 5, 1999

### 1 Tip 15 — Creating a Metapost Button

One can use the Metapost program to create encapsulated postscript graphics to include in your  $\LaTeX$  document. It's easy, fun, and you can create graphics that will give a research-like quality to your manuscript.

In this activity we are going to customize the toolbar in WinEdt to accommodate the Metapost program. The setup is accomplished in four steps:

1. Create `mp.bat`.
2. Place a button for Metapost on the WinEdt toolbar.
3. Configure the button to run Metapost when clicked.
4. Test the installation.

There is a tacit assumption that you are using the MikTeX-WinEdt installation.

#### 1.1 Creating the Batch File MP.BAT

Use WinEdt to open the file `dvips.bat` in the directory `\WinEdt\Bin\`. Select File→Save as and immediately save the file as `mp.bat` in the directory `\WinEdt\Bin\`. Next, change the line

```
DVIPS.EXE %1 %2 %3 %4 %5 %6 %7 %8 %9
```

in the file to

```
MP.EXE %1 %2 %3 %4 %5 %6 %7 %8 %9
```

Save and close the file `mp.bat`.

#### 1.2 Placing the Metapost Button on the WinEdt Toolbar

Right click the mouse on the WinEdt menubar in any gray area free of icons. I like to right click the gray area on the right side of the menubar. This will cause a popup menu to appear and you should select Tool Bar Setup from this menu.

You are now shown a large menu area with all kinds of button icons. These icons are in two groups, an upper group of icons that are already in use on your toolbar, and a lower group of button icons that are dormant, but ready to be put into use on the WinEdt toolbar. Locate the Metapost button icon in the lower group and click it with the left mouse button. This will select the Metapost button icon and disable (gray out) the remaining button icons.

The next step is to place the selected Metapost icon on the toolbar, which is the upper group of button icons that are already in use. Simply click with the left mouse button where you want your Metapost button to be placed. I like to click the dvi→ps button. This places the Metapost button immediately in front of the dvi→ps button.

The final step is to activate the changes made to the WinEdt toolbar. This is easy. Right click your mouse on any gray area of the toolbar and a popup menu will appear. Click the Apply selection on the popup menu. This will close the toolbar selections and return you to WinEdt. Note that the Metapost button is now located on your WinEdt toolbar.

### 1.3 Configuring the Metapost Button

Now we must configure our newly acquired Metapost button to run Metapost when clicked. Right click your mouse in the gray area of the WinEdt toolbar and select Menu Setup from the popup menu that appears. Under items you will find a list. Note that each item on this list is a menu item on the main WinEdt menu: File, Edit, Search, etc.

Use your left mouse button to double-click the &Accessories item in this list. This opens another popup menu, which contains all of the subitems on the Accessories menu: TeX, LaTeX, etc. Right click your mouse on the &DVIPS submenu item, then select Insert→Utility from the resulting popup menus. This will blank out a number of edit boxes which we will have to fill in.

Your cursor should be left in the upper left edit box where you should enter &Metapost as the menu item. After that, you have to complete a number of tasks.

- In the utility box, enter %~B\Bin\mp.bat "%N%T" (Note: If you want to know how I figured this one out, note that I stole it from the utility box on the DVIPS menu. Actually, you can read the WinEdt help to get this information, but that can be a little intimidating.)
- In the Caption edit box, enter Metapost... (Note: That's Metapost, followed by three dots. I don't know what the dots are for, so don't ask.)
- In the Start In edit box, enter %P
- In the Short Cut edit box, leave it as none or hit a pair of keystrokes like Ctrl+M to establish a keystroke shortcut to invoke Metapost. I haven't been using WinEdt long enough to know what the standard keyboard shortcuts are, so I just leave this as none.
- Click the first button icon in the pair of blank button icons to the immediate left of the Hint edit box. Select the Metapost button and icon and click OK.
- In the Hint edit box, enter Metapost.

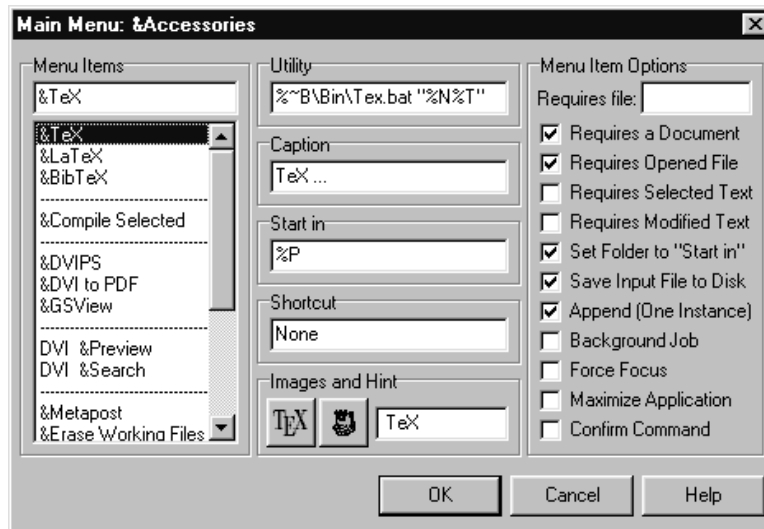


Figure 1: The Menu Setup Dialog.

- In the Requires File edit box, enter `%P\%N.mp` (Again, I stole this from the DVIPS menu, adjusting the file suffix from dvi to mp, the suffix expected by the Metapost program.)
- Finally, check each of the following checkboxes, leaving the others blank.
  - Requires a Document
  - Requires Opened File
  - Set Folder to "Start In"
  - Save Input File to Disk
  - Append (One Instance)

At this point, the Menu Settings dialog should look somewhat like that shown in Figure 1.

To complete the configuration:

- Click OK, then OK again to exit the Menu Setup dialog boxes.
- Select Options→Save Settings from the main WinEdt toolbar.

## 1.4 Testing the Installation

In WinEdt, Select File→New to start a new *blank* document. Enter the following code and save the file as `first.mp`.

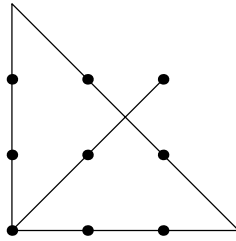


Figure 2: Our first Metapost graphic.

```

beginfig(1);
  u=1cm;
  draw (2u,2u)--(0,0)--(0,3u)--(3u,0)--(0,0);
  pickup pencircle scaled 4pt;
  for i=0 upto 2:
    for j=0 upto 2: draw (i*u,j*u); endfor
  endfor
endfig;
end

```

Now, create a new document, enter the following  $\text{\LaTeX}$  code, and save the file as `first.tex`. Compile, DVIPS, and preview in GSVIEW. If all goes well, you should get the image shown in Figure 2.

```

\documentclass{article}
\usepackage{graphicx}
\begin{document}
\includegraphics{first.1}
\end{document}

```